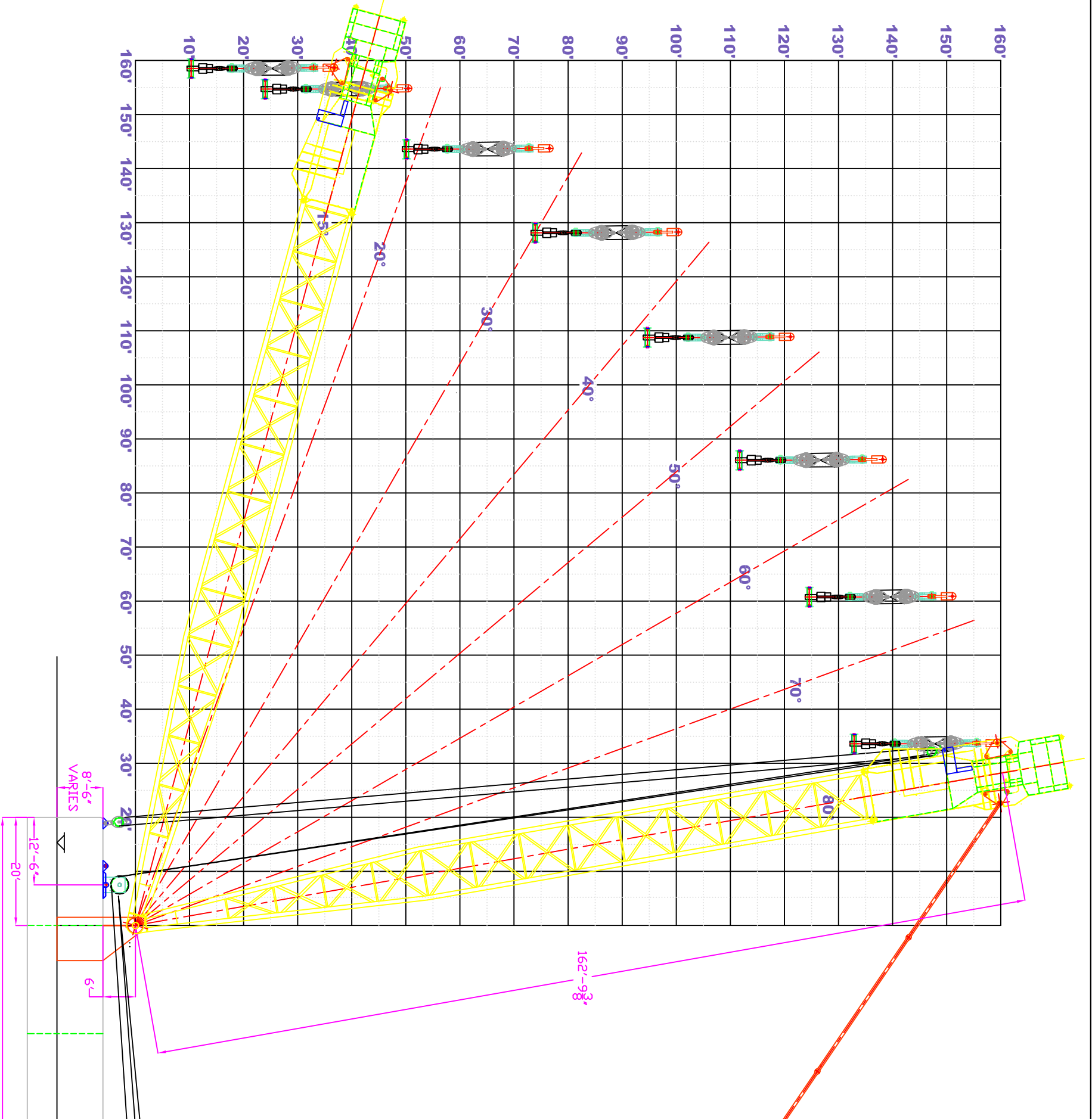


OCEAN RANGER 500 TON LOAD CHART

RADIUS (feet)	BOOM (deg)	CAPACITY (tons)	RADIUS (meters)	CAPACITY (tonnes)
35	79.52	500	10.67	453
40	77.71	500	12.19	453
45	75.89	500	13.72	453
50	74.05	500	15.24	453
55	72.19	500	16.76	453
60	70.30	500	18.29	453
65	68.40	500	19.81	453
70	66.46	500	21.33	453
75	64.50	500	22.86	453
80	62.49	460	24.38	417
85	60.45	413	25.91	374
90	58.36	375	27.43	340
95	56.22	338	28.95	306
100	54.03	300	30.48	272
105	51.76	270	32.00	244
110	49.41	240	33.53	217
115	46.98	213	35.05	192
120	44.43	185	36.57	168
125	41.76	158	38.10	143
130	38.92	130	39.62	118
135	35.89	105	41.15	95
140	32.60	78	42.67	70
145	28.95	50	44.19	45
150	24.77	25	45.72	23
155	19.69	0	47.24	0
160	12.48	0	48.77	0

NOTES:

1. RADII ARE MEASURED FROM BOOM FOOT PIN.
2. CAPACITIES INCLUDE WEIGHT OF LOAD BLOCKS, HOIST WIRE ROPE AND SWIVEL.
3. BARGE FREEBOARD WILL DEPEND ON LOAD LIFTED AND BALLAST REQUIREMENTS.
4. DO NOT EXCEED A 80° BOOM ANGLE.
5. DECREASE BOOM ANGLE LESS THAN 15° WITHOUT ASSIST CRANE(S) ATTACHED TO BOOM.



STIFF-LEG DERRICK ON OCEAN RANGER RANGE CHART